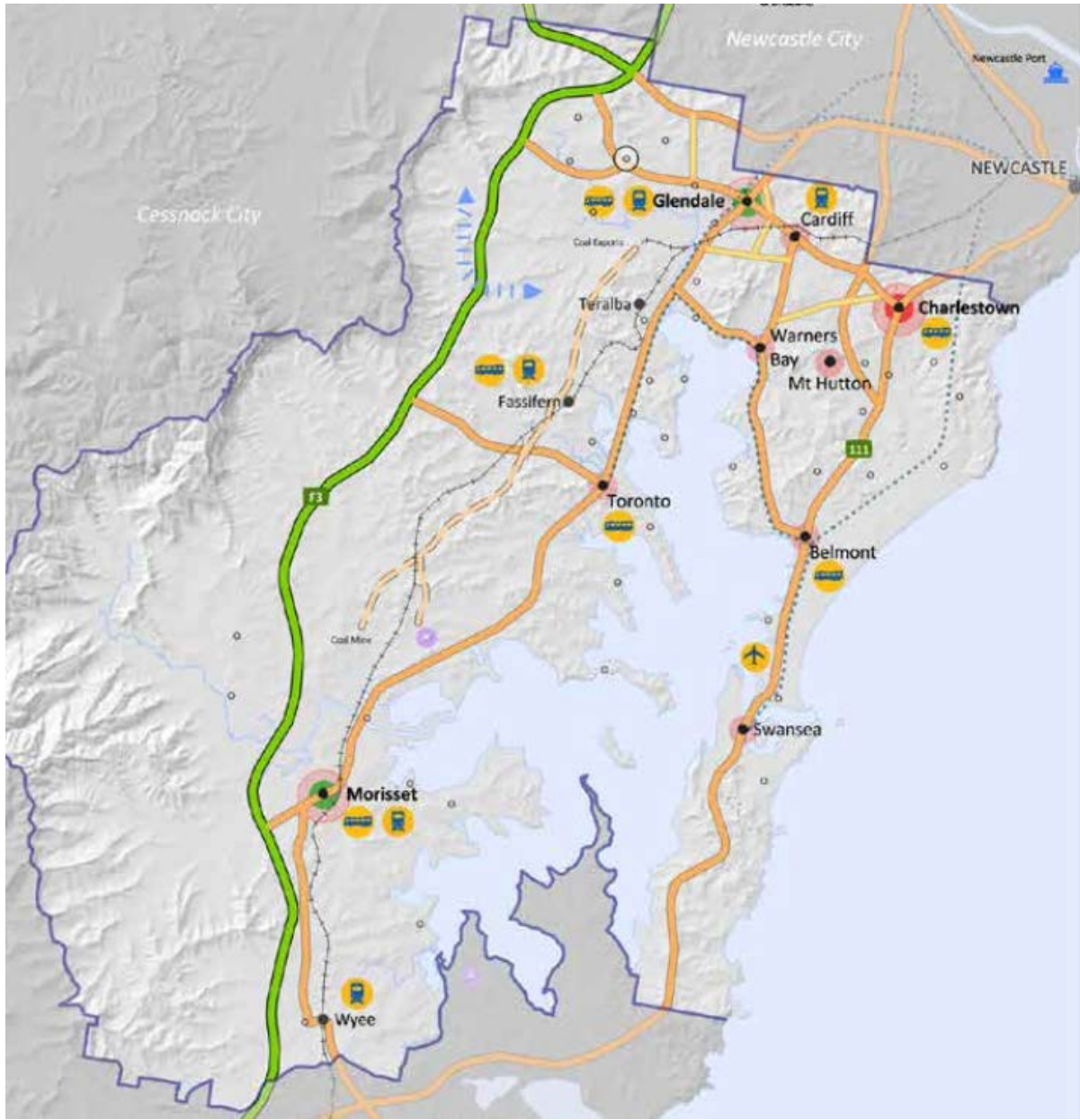




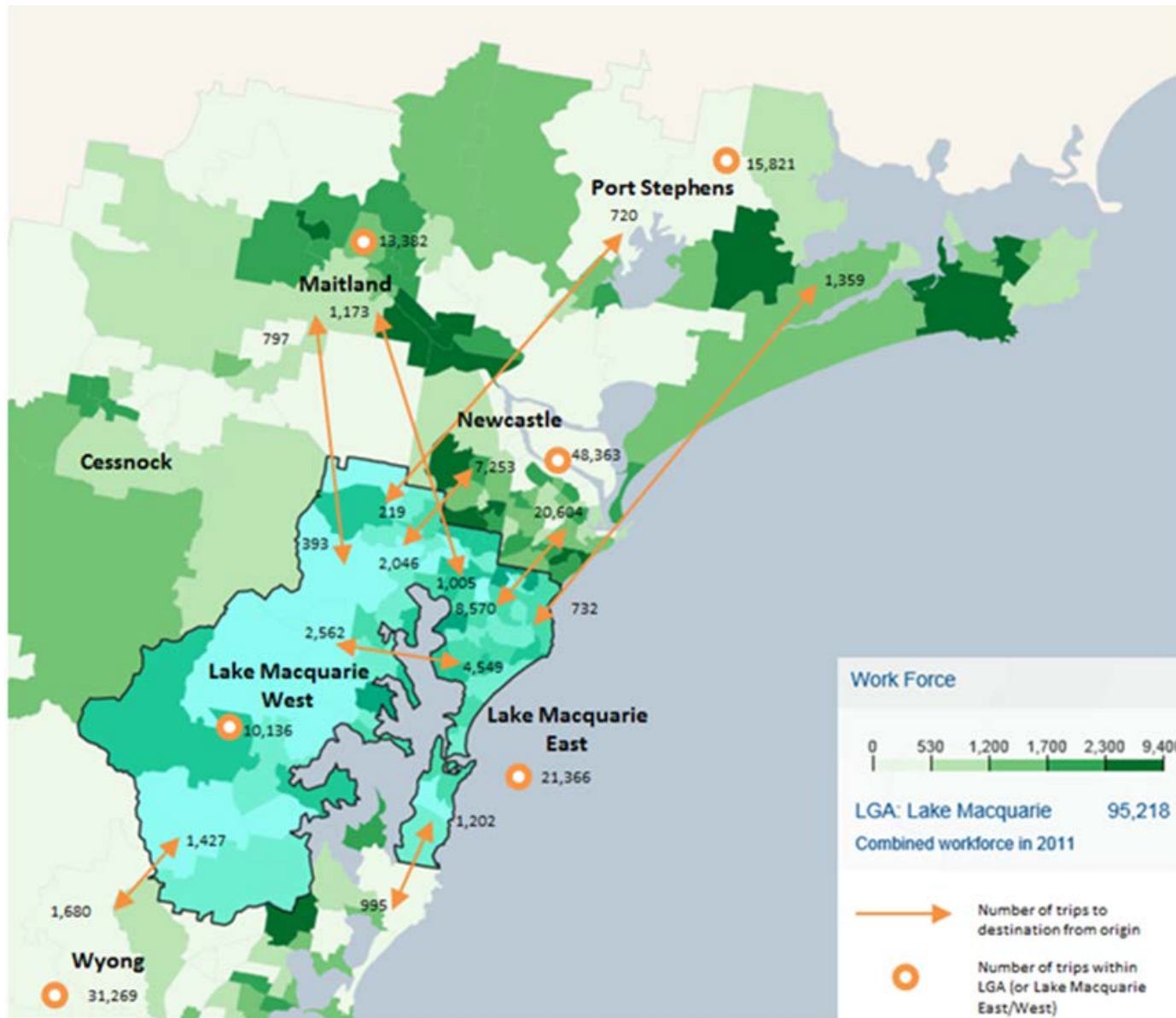
Tipping the scales

Putting people back into street design

Karen Partington
Senior Strategic Planner
Integrated Planning Department

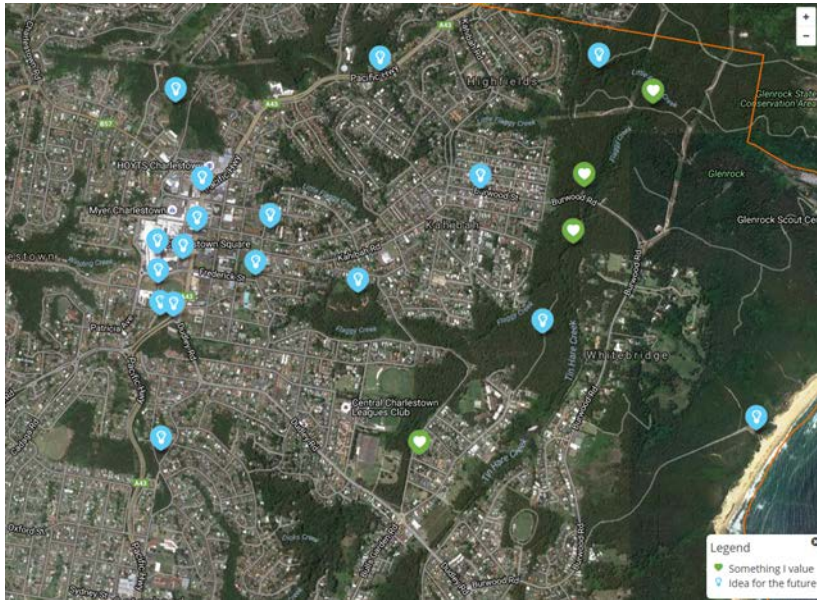


LMCC, Lifestyle 2030 Strategy



ABS Census Data 2011, Journeys to Work

#Shapeyourfuture



Future forum series

Got ideas on what would improve Lake Macquarie City?

Here's your chance to influence the future of an entire city and learn from leading futurists.

- Be entertained and gain insight from leading local futurists as they talk about what influences our future and how we can shape it.
- Be part of a working party to help establish principles on which Council's decision-making will be based – guiding Lake Mac City for the next 30 years.

FEATURING

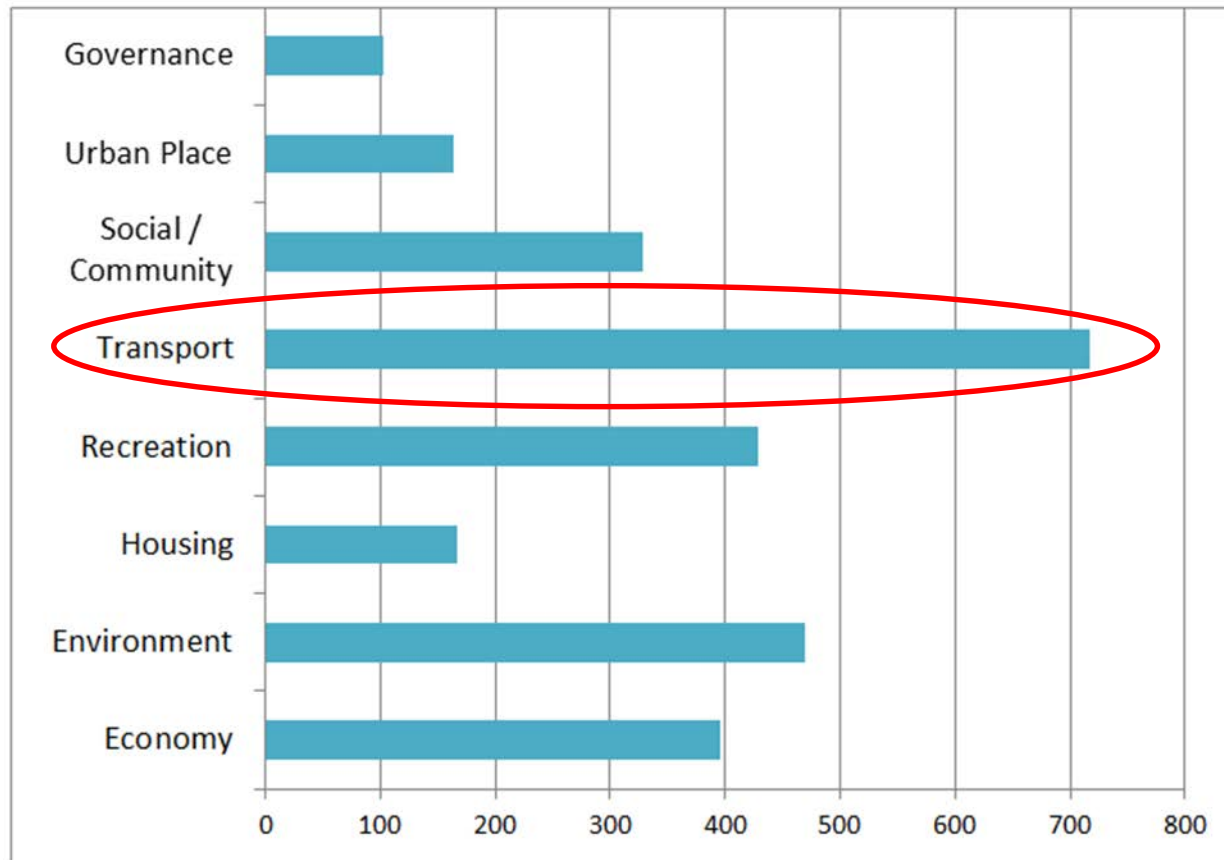
 Dr Brent Jenkins <small>CEO Lake Macquarie City Council</small>	 Christina Givvykita <small>CEO Lake Macquarie City Council</small>	 Dr Gary Elmer <small>Former Mayor of Lake Macquarie City Council</small>	 Heidi Pollard <small>Chief Executive Officer, Lake Macquarie City Council</small>
Future Economy Forum Lake Macquarie Community Arts Centre, Warners Bay Tuesday 15 September, 6pm Our Future Forum Wang Wang Hall Wednesday 28 September, 6pm	Future Wellbeing Forum The Hub, Charlestown Community Centre Wednesday 16 September, 6.30am Our Future Forum Emerald Wharf Club Thursday 22 September, 9.30am	Future Environment Forum Our Future Forum, Living Shed Thursday 15 September, 6pm Our Future Forum The Camp, Camp Hill Thursday 22 September, 6pm	Our Future Forum Club Macquarie, Aquatic Centre Thursday 15 September, 6pm Our Future Forum Mulookah Multi purpose Centre Sunday 20 September, 6pm

It's FREE. Limited places, book now!
shapeyourfuture.net.au ☎ 4921 0333

www.lakemac.com.au
[lakemac](https://www.facebook.com/lakemac)
[lakemac](https://www.instagram.com/lakemac)
[lakemac](https://www.youtube.com/lakemac)

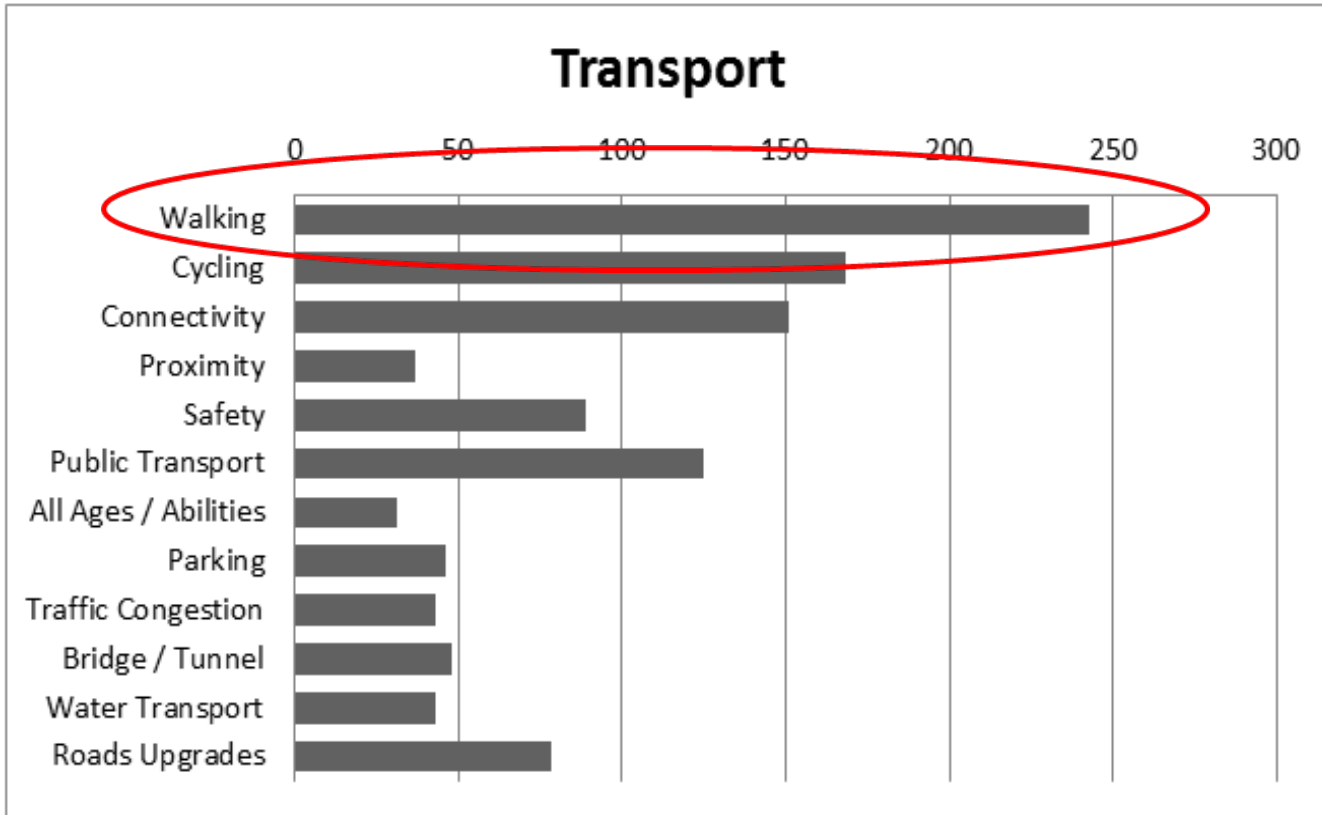


Summary of comments by category



City Vision & Values – Stakeholder Engagement Summary Report 2016

Transport Comments



City Vision & Values – Stakeholder Engagement Summary Report 2016

What the community was saying...

“Our centres need to be connected together by wide shared pathways (separated from roads), better public transport and better access”

“Traffic lights! I'd like to get across the road with my kids without being squashed by a truck.”

“How about planning for people instead of cars?”

“Footpaths! How about some equity for those who prefer to walk!”

“The 'walkability' of our suburbs is appalling. There's a serious lack of footpaths.”

“Cycleways improve the road network efficiency by allowing those who choose to ride to destinations.”

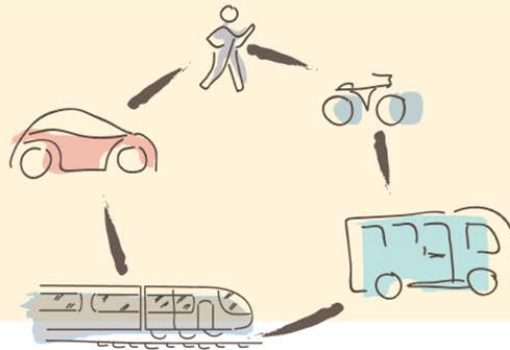
OUR VISION

Lake Macquarie is a City with a lake at its heart encircled by distinctive towns and villages.

We balance our cherished environments with our need for great spaces to live and visit, smart transport options and a thriving economy; which adapt and strive to be fair for all.

We value **MOBILITY AND ACCESSIBILITY**

effective transport systems that provide choices to conveniently move people, goods and services.



We value our **UNIQUE LANDSCAPE**

a place where the natural environment (bushland, coast, lake and mountains) is protected and enhanced; where our existing urban centres are the focus of our growth, maintaining their unique characteristics.



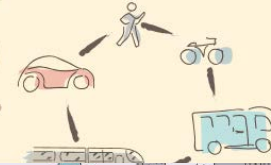
We value **LIFESTYLE AND WELLBEING**

a place that encourages safe, active and social opportunities.



We value **MOBILITY AND ACCESSIBILITY**

effective transport systems that provide choices to conveniently move people, goods and services.



We value a **DIVERSE ECONOMY**

which is resilient and adaptable to change, making the best use of the unique advantages of our location and lifestyle.



We value **CONNECTED COMMUNITIES**

that support and care for all and provide a sense of belonging.



We value **CREATIVITY**

working together with creative process and outcomes that bring together history, culture, knowledge and expertise that supports new technologies and ways of thinking.

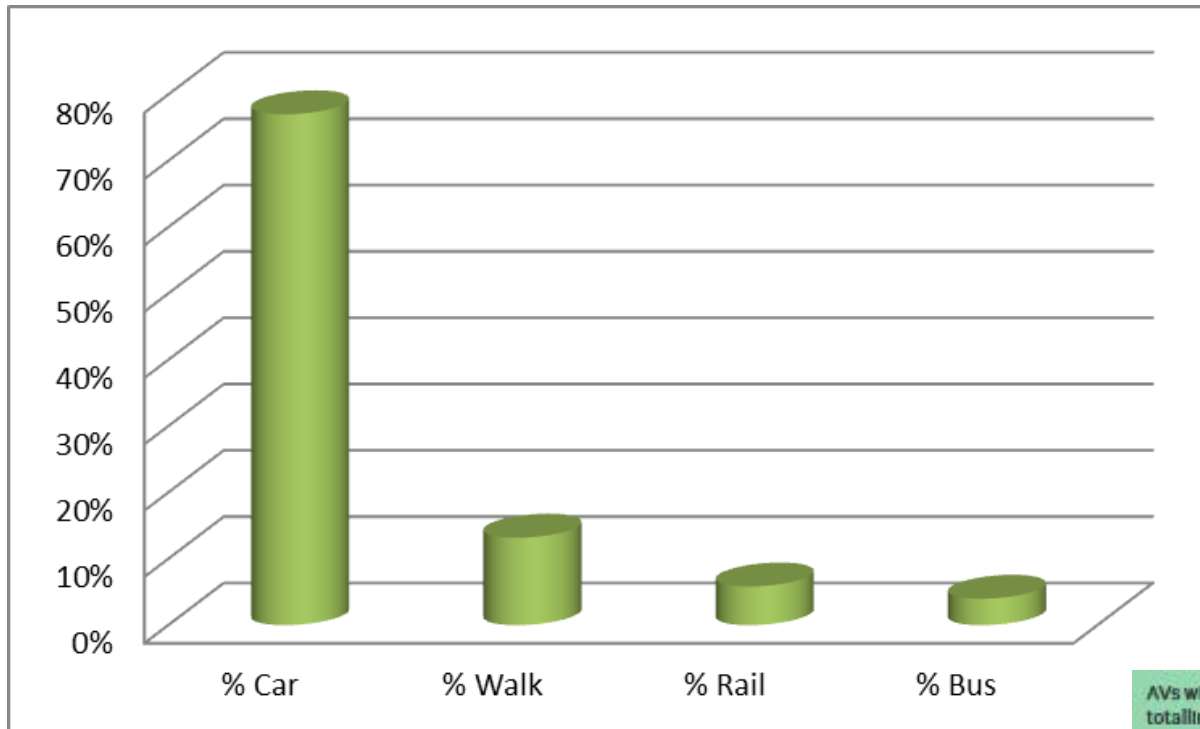


We value **SHARED DECISION-MAKING**

Lake Macquarie communities continue shared responsibility for governance.

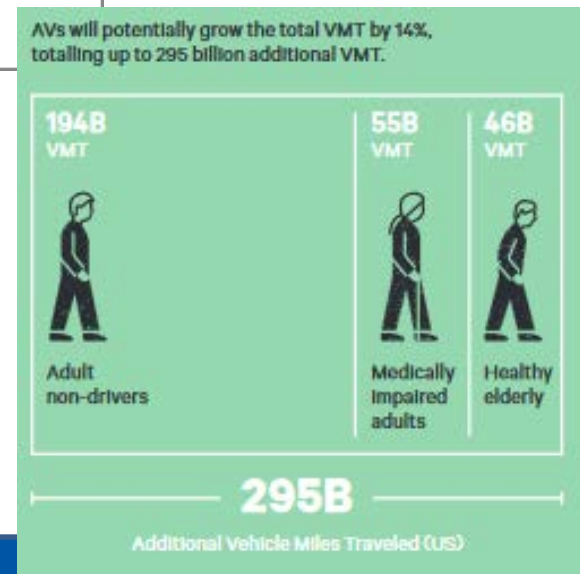


Lake Mac trips by mode 2016

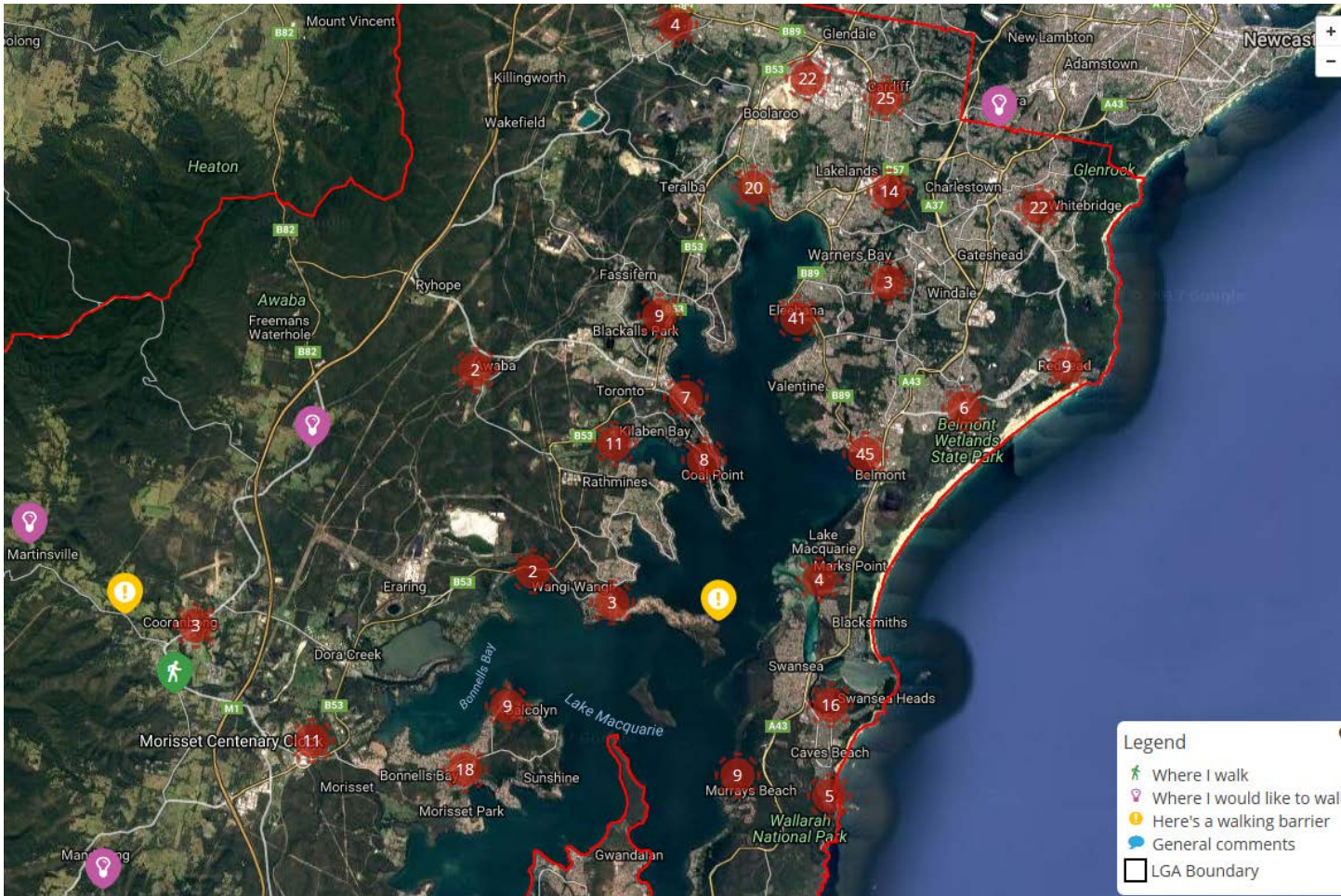


Trend to
continue
towards
2050

AVs providing new demand for auto travel



Lake Mac Walks – online engagement





Practitioner workshop



Join us at a free Public Forum and Practitioner Workshop on Wednesday 8 March 2017 at the Lake Macquarie Performing Arts Centre at Warners Bay.

Lake Macquarie City Council receives frequent feedback from the community about walking and cycling in Lake Macquarie and the Hunter Region. We want to ensure the region plans better so people can choose to walk more.



Public forum



+65%

retail spent

According to Transport for London analysis, pedestrians usually spend 65% more than drivers.

“The economic value of walking has been described as the walking economy. There is a direct link between the city’s economic prosperity and the safety and convenience of the pedestrian experience.”

- City of Melbourne, 2012

-49%

vacancy rate

Expanding walking facilities in Manhattan’s *Union Square North* reduced commercial vacancies by up to 49%.

+300%

increase in visitors

The transformation of the pedestrian environment in London’s *Trafalgar Square* led to a dramatic increase in visitors.³²

13:1

benefits vs costs

Recent studies on the economic benefits of walking interventions show an average benefit-to-cost ratio of 13:1.³⁷

-74%

crime

In Kansas City, crime in Kessler Park dropped by 74% the year that 2.6 miles around it were turned car-free on weekends.³⁰

Adults who live in the most activity-friendly neighbourhoods do 48 to 89 minutes more physical activity per week than those in less active-friendly neighbourhoods

International Physical Activity and Environment Network,
The Lancet, April 2016

-67%

pedestrian crashes

In New York City, a painted median and other traffic calming measures in the Bronx have lowered speed and pedestrian injuries.²⁴

+3.1

friends per person

Residents of a street with 2,000 vehicles per day have three times as many friends as one with 16,000 vehicles.⁴³

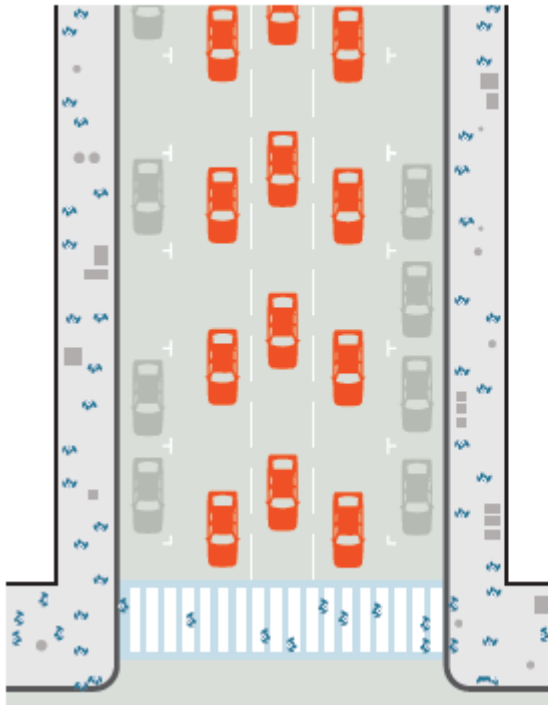


The spaces, structures, and surfaces that shape our streets must be rethought, reimagined, and redesigned to function more efficiently and effectively for the needs of more people.

We must be creative about the infrastructure we already have, and improve the capability of urban streets to support a healthy, liveable, and sustainable future for generations to come.

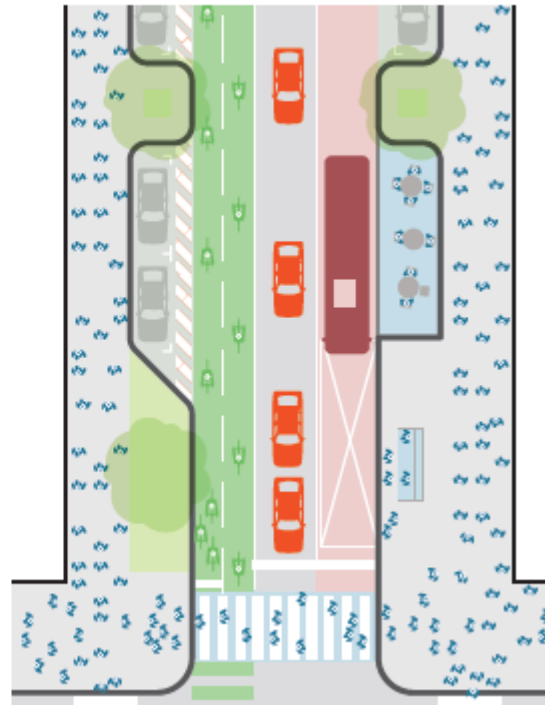
Michael Bloomberg
Founder, Bloomberg Philanthropies
Former Mayor of the City of New York

Car-Oriented Street



Total capacity: 12,300 people/h

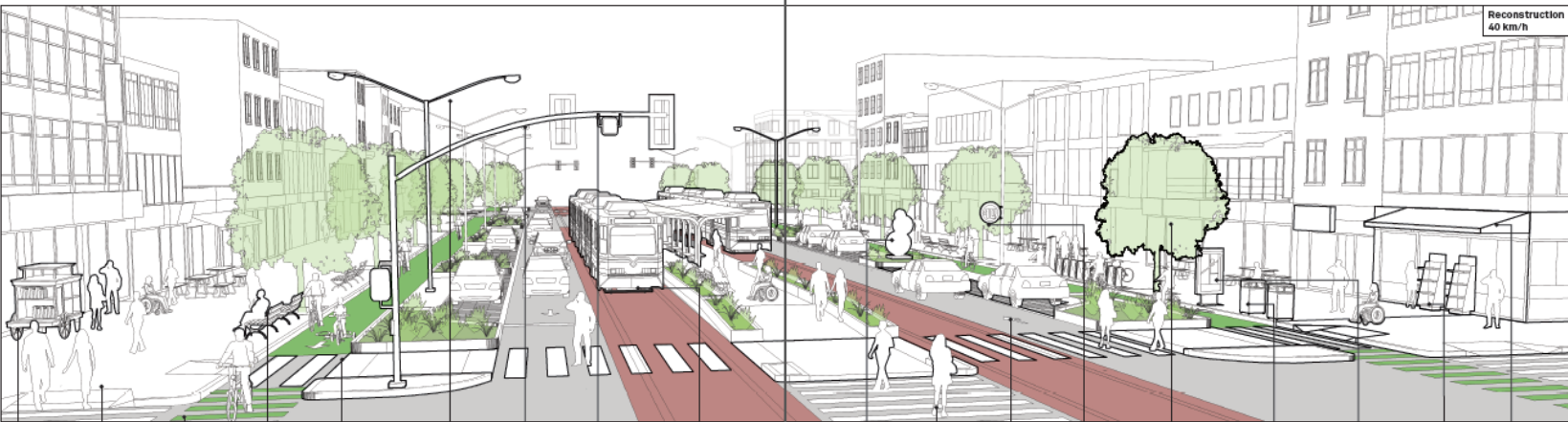
Multimodal Street



Total capacity: 30,100 people/h²⁰

Redesigning Streets - What is possible?

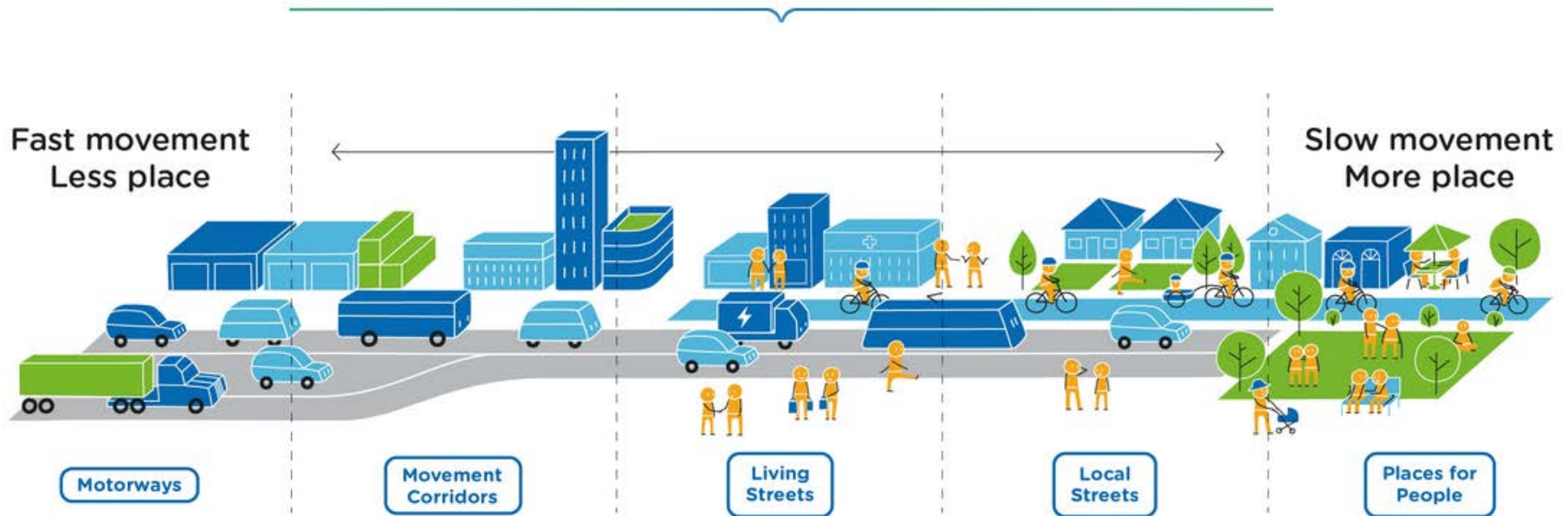
The *Global Street Design Guide* examines achievable infrastructure changes, taking into account existing street design and project goals. These improvements allow cities to best utilize their public space, enhance existing places, and foster economic activity. These changes aid in promoting traffic safety and efficient movement of all modes of transport.



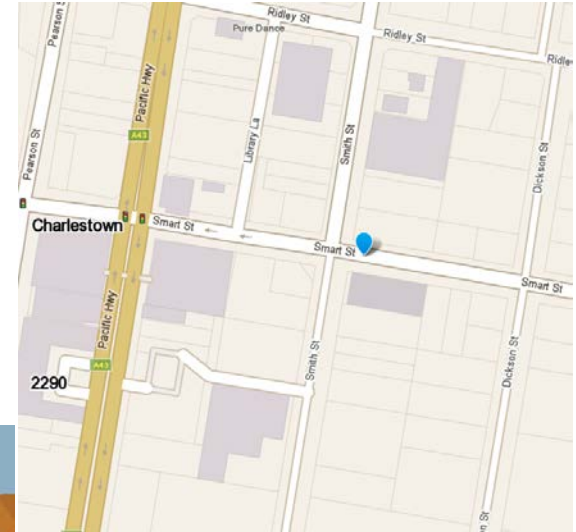
- | | | | | | | | | | | | | | | | | | |
|------------------------|------------------------|-------------------------|-------------|-------------------------------------|-------------------------------|-----------------|---------------------|------------------|--------------------------|--------------------------|-------------------|---------------------|--------------------------|--------------------------|--------------------|------------------------|----------------------------|
| Invite Street Activity | Change Street Geometry | Create Cycle Facilities | Add Seating | Add or Improve Pedestrian Crossings | Add Energy-Efficient Lighting | Improve Signals | Enhance Enforcement | Organize Transit | Integrate Public Artwork | Connect Walking Networks | Upgrade Materials | Reduce Speed Limits | Add Green Infrastructure | Provide Street Furniture | Include Wayfinding | Activate Ground Floors | Provide Climate Protection |
|------------------------|------------------------|-------------------------|-------------|-------------------------------------|-------------------------------|-----------------|---------------------|------------------|--------------------------|--------------------------|-------------------|---------------------|--------------------------|--------------------------|--------------------|------------------------|----------------------------|

Transport for NSW – Future Transport Strategy

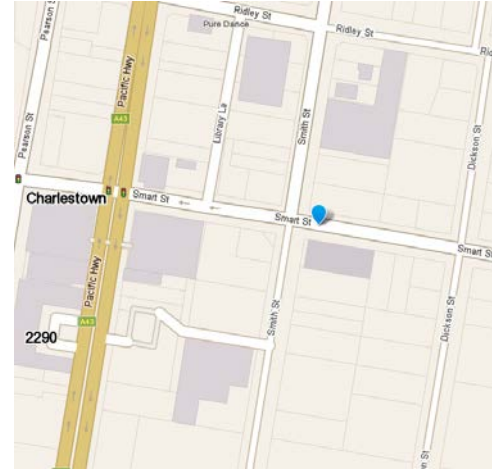
Balancing freight movement and place



How might this look for Lake Mac?



How might this look for Lake Mac?





Questions?

Karen Partington
Senior Strategic Planner
Integrated Planning Department