



Mining and Biosecurity

Are you prepared?

Shannon Mulholland

What is biosecurity?

The protection of the economy, environment and community from the impact of pests, weeds and diseases

- Shared responsibility

What is biosecurity?



Recent Incursions



Why is it important?

- Karnal blight outbreak - \$350 million
- Citrus canker outbreak - \$400 million
- Avian influenza outbreak - \$10 billion



Why is it important?

- Affects our food, our trade, our economy
- Need to double food production by 2050
- NSW already lost around 19% mammal species since European settlement
- >1,650 weed species in NSW
- Weeds and pest animals already cost NSW >\$1.3 billion each year

What's at stake?

- Post-mining rehab and offset areas
- Total value of farm produce for FY16-17 around \$58.5 billion
- Local economy and environment
- Ability to have “home grown” food

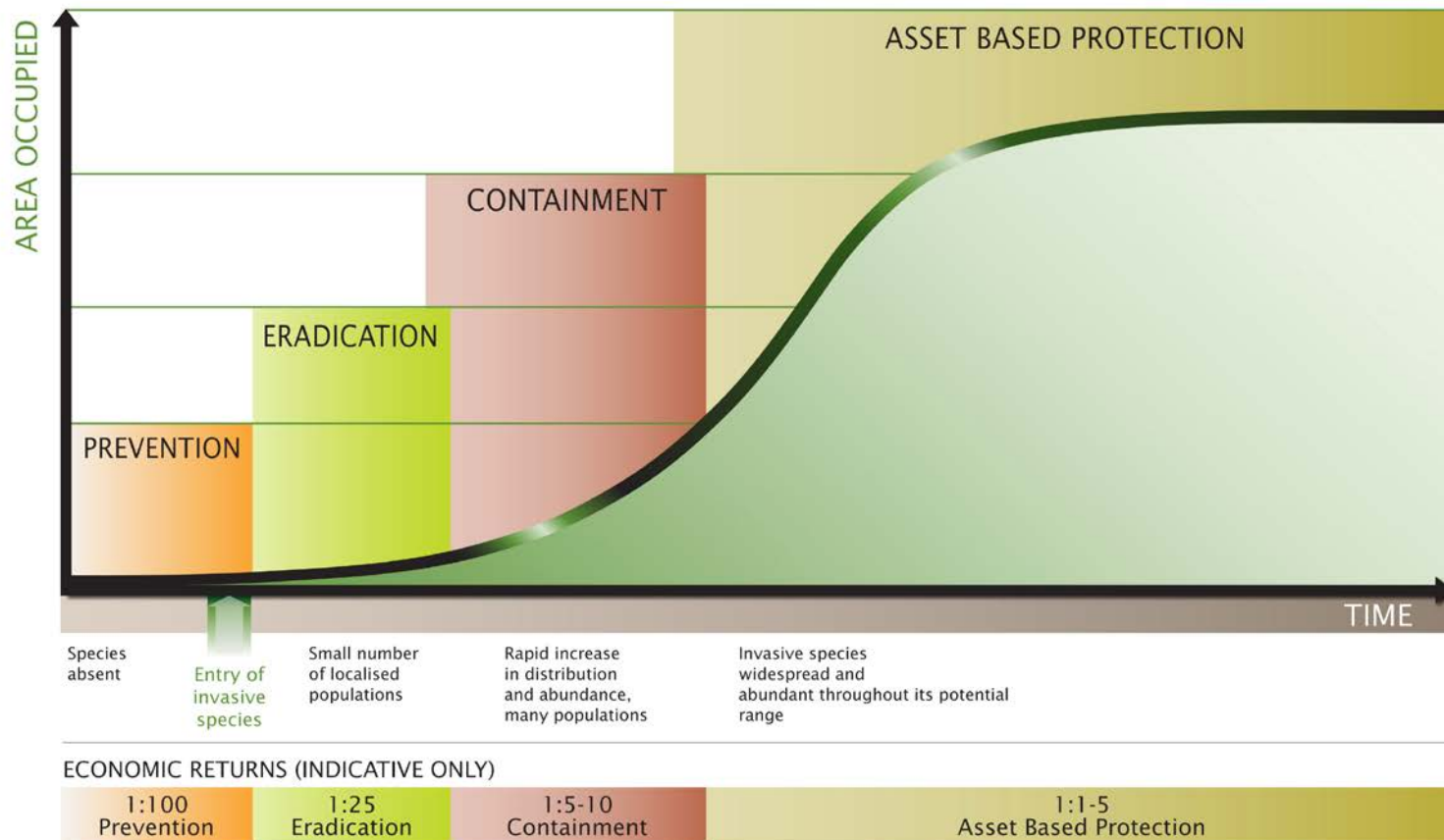
Biosecurity Strategy

1. Prevent entry of new pests
2. Quickly find and eradicate new incursions
3. Minimize impacts of pests that cannot be eradicated

Cost Benefit Analysis

GENERALISED INVASION CURVE SHOWING ACTIONS APPROPRIATE TO EACH STAGE

Version 1.0: 30 APR 2009



Biosecurity Risks

- Dirty equipment – vehicles -

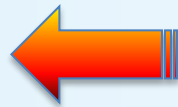


- Think big then think small –
how clean are your boots?



Biosecurity Risks

- Anyone moving on/off site
- Interstate/overseas visitors



MA Nash Copyright

Myrtle Rust (*Puccinia psidii*)

- Fungal disease affecting Myrtaceae spp.
 - Eucalypts, turpentine, bottlebrush, paperbark, tea tree, lilly pilly: >300 species
- First detected in 2010 in Gosford area



Myrtle Rust (*Puccinia psidii*)

- Attacks soft young leaves and shoots
- Spores spread by wind, water, insects
- Be alert!
- Purchase clean plants
- Consider your spp. lists



Impact on your neighbours?

- Phylloxera – soil borne insect kills grapevines
 - Spread in contaminated soil, grapes
 - Cannot be eradicated
-
- In the Sydney area
 - \$26 million market

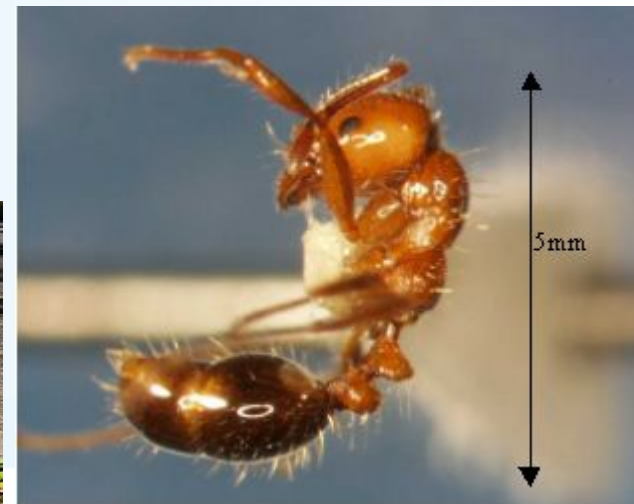
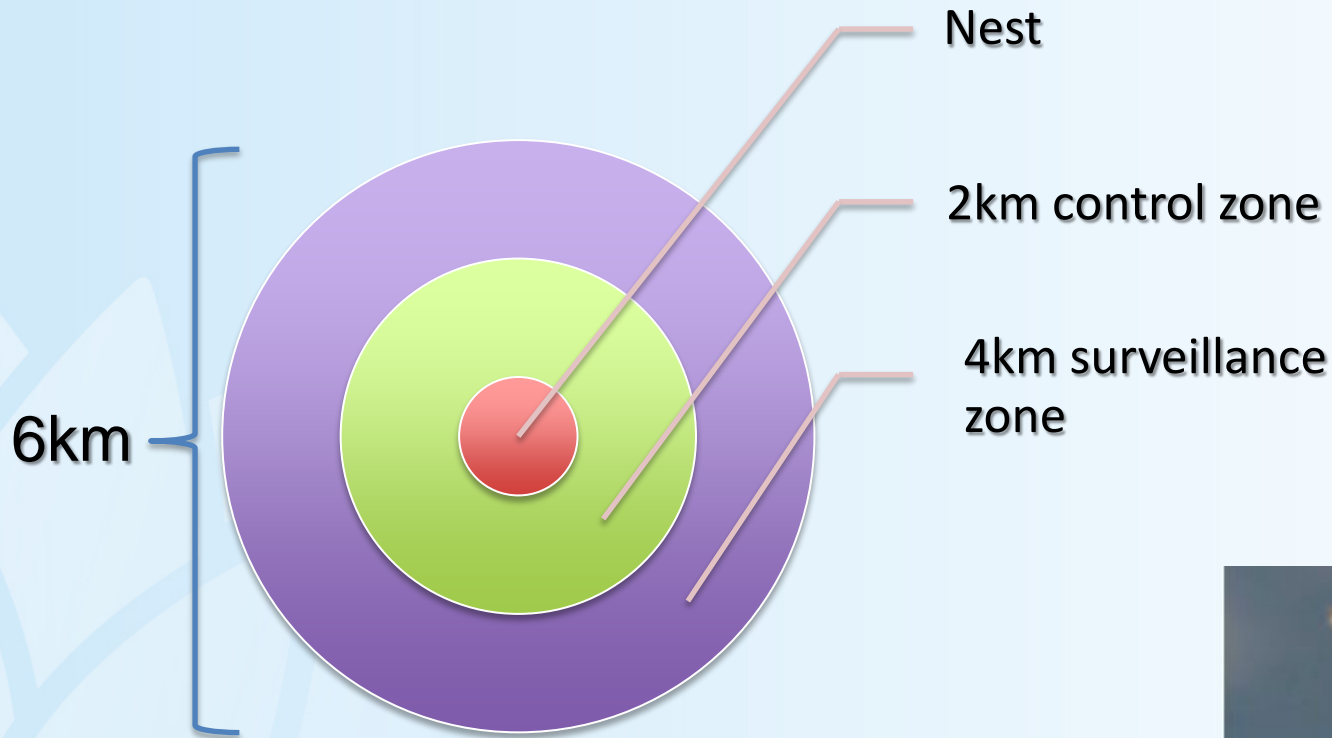


Red Imported Fire Ant (*Solenopsis invicta*)

- Incursions: Brisbane, Yarwun, Port Botany
- Originally from Argentina
- 6 incursions to date, 4 controlled
- Spent >\$300 million by 2014 on control



Red Imported Fire Ant



Better Biosecurity

Come Clean, Go Clean

- Quarantine car parks
- Use reputable nurseries, suppliers etc.
- Surveillance!



Reporting suspects

- Plant Pest Hotline 1800 084 881
- Contact local NSW DPI office
- www.dpi.nsw.gov.au/biosecurity
- Contact local LLS Biosecurity Officer

